



ROSEVILLE OFFICE PLAZA
1970 Oakcrest Avenue • Roseville, Minnesota

FEATURES

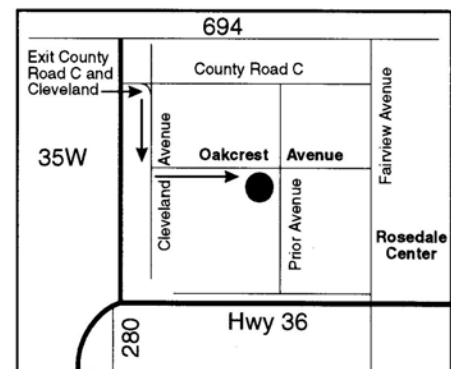
- Marble Atrium Entry
- 24-Hour Security Card Access
- Federal Express and UPS Services
- Plentiful Free Parking
- Men's and Women's Exercise Facilities w/ Showers
- Free Executive Conference Room
- Lunchroom with Vending Machines
- 9' Ceilings
- Coordinated Recycling Program
- Handicapped Equipped

SUITE FEATURES

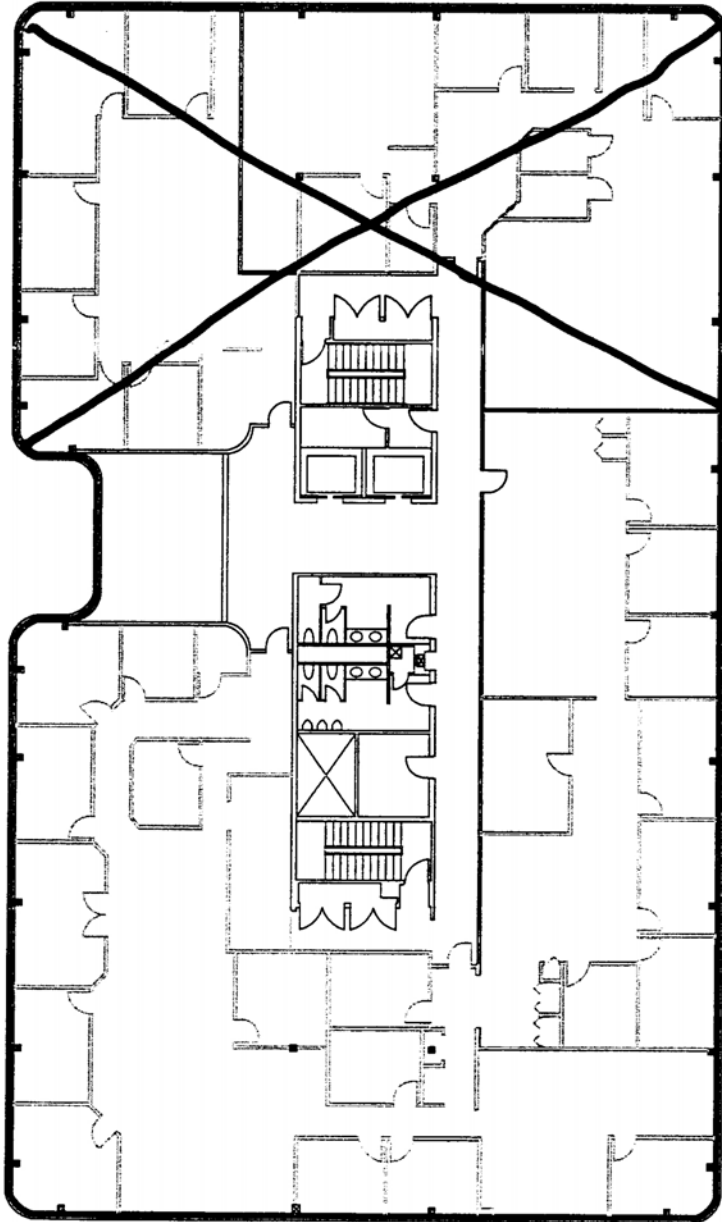
- 700 Square Feet and Up
- Turnkey Buildouts
- 9' Entry Doors
- 8' Solid Oak Interior Doors
- Suite Signage

LOCATION

- 15 Minutes from St. Paul & Minneapolis
- Near I-35W and Highway 36
- Just West of Rosedale Shopping Center
- Near Restaurants, Hotels, Retail and Post Office



For further information:



8959 SF Available

ROP

SECOND FLOOR



ROSEVILLE OFFICE PLAZA

For further information: